

YEAR

2023

LINK CHATHAM RD N (from WUHU ST to HONG CHONG RD)

COVERAGE (B) STATION

4208

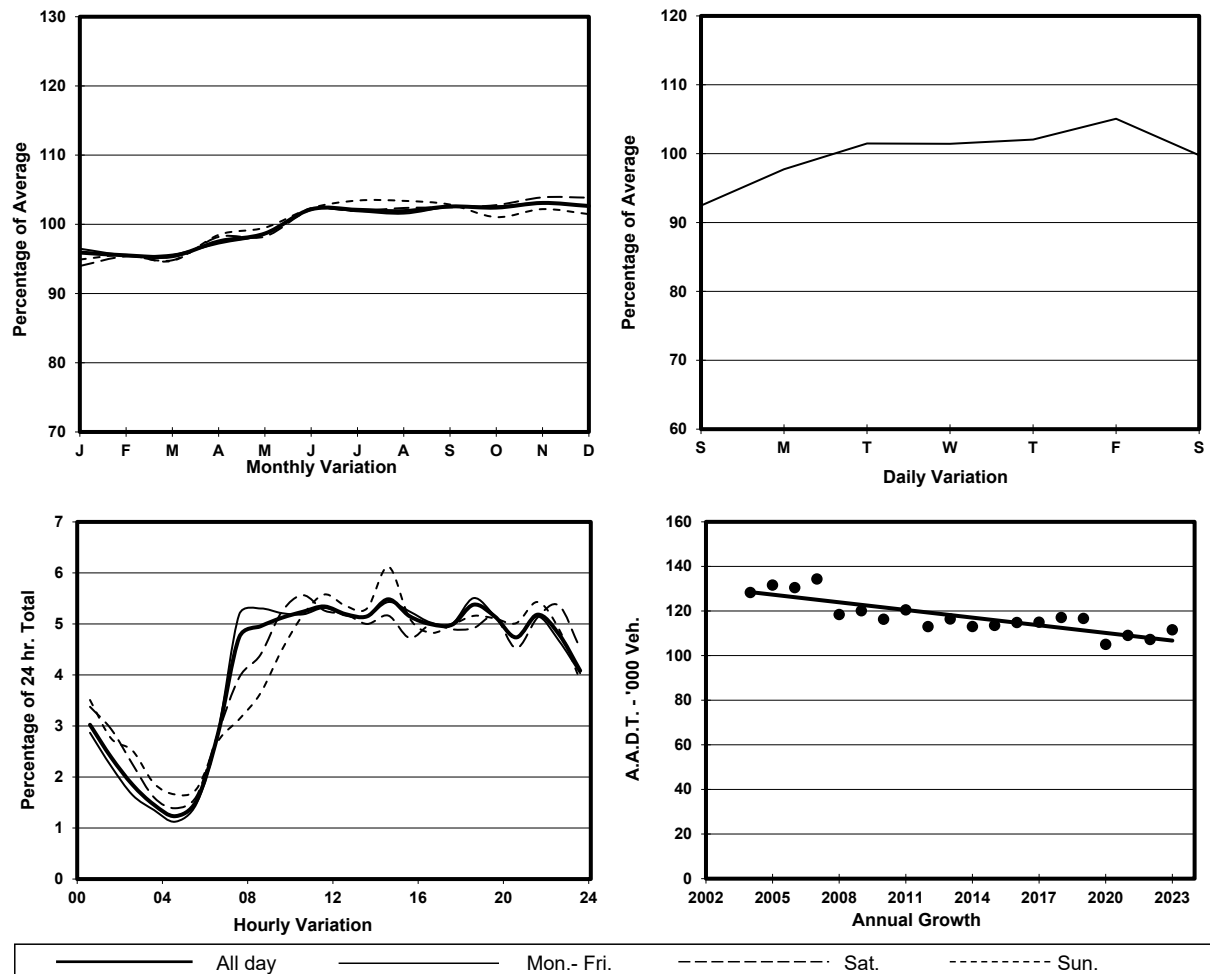
ROAD NETWORK

MAJOR

ROAD TYPE

PRIMARY DISTRIBUTOR

1. TRAFFIC FLOW VARIATION AND GROWTH



2. TRAFFIC CHARACTERISTICS (BY DIRECTION)

Parameter	All - Day	Mon. - Fri.	Sat.	Sun.
SOUTH BOUND				
A.A.D.T.	44180	44580	44060	43780
R 12 / 24 - %	58.3	58.7	57	57.5
R 16 / 24 - %	78.5	78.9	77.1	77.8
AM Peak Hour	0700-0800	0700-0800	0900-1000	0900-1000
One-way flow at AM peak hour	2490	2660	2720	2170
T - % (AM)	-	14.7	-	-
PM Peak Hour	1800-1900	1800-1900	1800-1900	1800-1900
One-way flow at PM peak hour	2000	2040	1920	1950
T - % (PM)	-	10.8	-	-
Prop.of commercial vehicles - 16 hr.	-	12.1	-	-
NORTH BOUND				
A.A.D.T.	67360	69380	68280	58710
R 12 / 24 - %	64	65.3	60.8	59.9
R 16 / 24 - %	83.6	84.7	81	80.5
AM Peak Hour	0900-1000	0800-0900	0900-1000	0900-1000
One-way flow at AM peak hour	3410	3730	3160	2430
T - % (AM)	-	12.1	-	-
PM Peak Hour	1800-1900	1800-1900	1700-1800	1700-1800
One-way flow at PM peak hour	4000	4240	3900	3370
T - % (PM)	-	7.6	-	-
Prop.of commercial vehicles - 16 hr.	-	9.6	-	-

3. OTHER INFORMATION AND COMMENT

4. Vehicle classification and occupancy - Monday to Friday

Time		Class of vehicle									
		Motor Cycle	Private Car	Taxi	Private LB	PLB	Goods veh.		Non Fr. Bus	Fr. Bus	
							Light	M & H		SD	DD
0700-0800	Pro	7.4	34.6	21.2	3.6	1.4	14.6	7.5	3.9	0.0	5.8
	Ocp	1.1	1.4	1.9	8.3	10.6	1.3	1.2	13.0	0.0	32.0
0800-0900	Pro	4.4	48.3	16.1	1.3	1.7	15.5	4.0	2.9	0.0	5.8
	Ocp	1.0	1.3	2.0	3.7	9.9	1.4	1.3	16.1	0.0	34.4
0900-1000	Pro	3.9	36.8	25.4	0.3	0.7	20.8	5.3	1.9	0.1	4.8
	Ocp	1.1	1.3	2.0	3.4	6.3	1.4	1.2	11.9	1.0	23.9
1000-1100	Pro	4.9	29.8	28.1	0.5	1.0	23.6	6.3	0.9	0.0	5.1
	Ocp	1.1	1.3	1.9	1.6	5.9	1.4	1.2	11.2	0.0	21.2
1100-1200	Pro	3.6	32.0	27.1	1.2	0.8	25.0	4.6	1.3	0.0	4.5
	Ocp	1.1	1.5	1.8	2.7	6.3	1.4	1.2	14.3	0.0	22.3
1200-1300	Pro	3.2	36.3	24.5	1.2	0.7	22.2	5.3	2.5	0.0	4.1
	Ocp	1.1	1.4	2.0	4.8	7.6	1.4	1.2	17.9	0.0	24.3
1300-1400	Pro	3.9	36.4	25.0	1.5	0.6	21.4	5.1	2.3	0.1	3.8
	Ocp	1.0	1.4	2.0	2.5	9.1	1.4	1.2	19.8	3.0	28.3
1400-1500	Pro	4.6	37.0	24.2	1.2	0.8	20.6	5.0	2.1	0.0	4.4
	Ocp	1.0	1.4	2.1	1.6	7.3	1.3	1.2	5.8	0.0	24.6
1500-1600	Pro	3.8	39.8	23.3	2.7	0.6	20.8	2.5	1.9	0.0	4.6
	Ocp	1.1	1.5	2.1	5.4	8.9	1.3	1.2	7.2	0.0	25.4
1600-1700	Pro	5.3	42.2	20.6	2.0	0.7	18.3	3.5	2.2	0.0	5.3
	Ocp	1.1	1.5	2.0	2.5	9.0	1.5	1.2	6.3	0.0	28.6
1700-1800	Pro	7.8	43.6	20.3	1.7	1.2	14.8	1.8	3.1	0.0	5.6
	Ocp	1.1	1.4	2.2	1.7	10.3	1.5	1.2	5.0	0.0	39.3
1800-1900 Peak hour	Pro	9.6	51.4	20.7	0.2	1.0	8.7	1.7	1.4	0.0	5.3
	Ocp	1.1	1.4	2.2	1.3	13.6	1.3	1.2	15.0	0.0	49.0
1900-2000	Pro	5.7	51.2	25.8	0.2	1.1	8.3	0.8	1.1	0.0	5.7
	Ocp	1.1	1.5	2.0	2.3	12.1	1.4	1.2	8.8	0.0	35.8
2000-2100	Pro	5.2	46.8	32.5	0.0	0.9	7.8	0.9	0.9	0.0	5.0
	Ocp	1.1	1.4	2.0	0.0	9.8	1.4	1.1	3.1	0.0	27.3
2100-2200	Pro	5.4	46.6	33.2	0.0	1.1	6.7	1.4	0.6	0.0	5.0
	Ocp	1.1	1.5	2.1	0.0	10.9	1.4	1.4	3.3	0.0	28.4
2200-2300	Pro	6.0	42.1	36.2	0.0	1.3	8.0	1.1	0.3	0.0	5.2
	Ocp	1.1	1.5	2.0	0.0	7.7	1.4	1.4	1.0	0.0	26.4
16 hours	Pro	5.3	40.9	25.1	1.1	1.0	16.3	3.6	1.8	0.1	5.0
	Ocp	1.1	1.4	2.0	4.2	9.3	1.4	1.2	11.5	2.0	30.0

Legend: Pro. Proportion of vehicles in % (Sum may not add up to 100% due to figure rounding)*

Ocp. Average occupancy of vehicles including both driver and passengers*

M&H Medium and Heavy

* All traffic data are collected from combined bounds